

GRC RAISED FLOOR



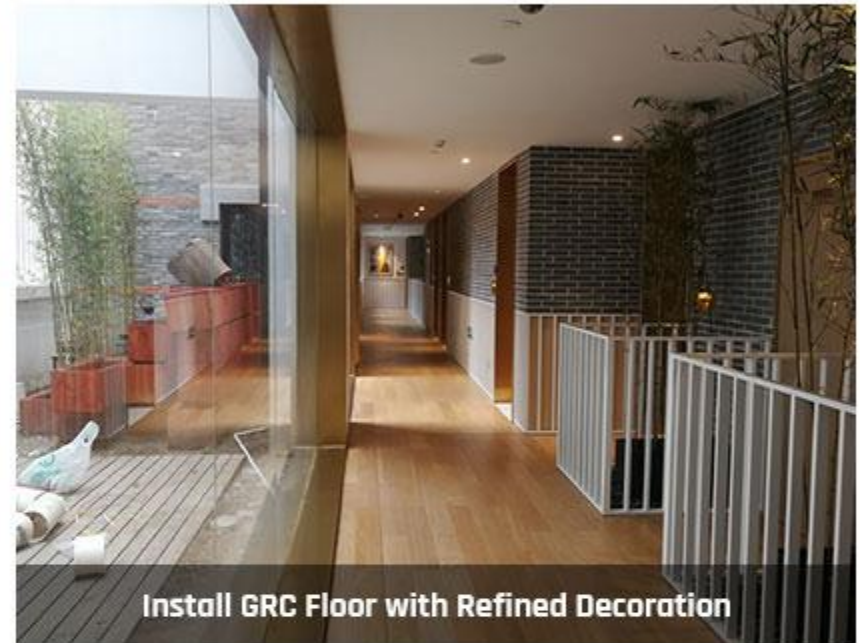
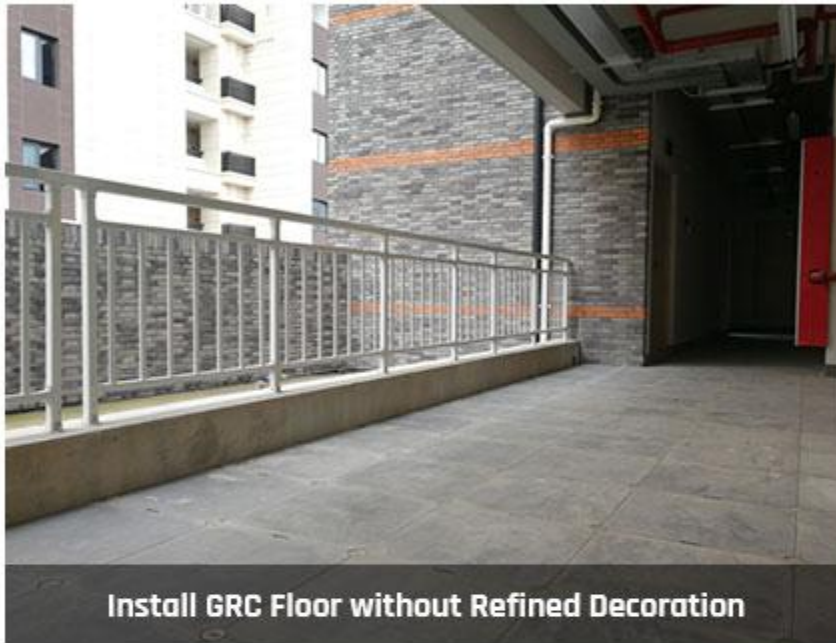
Application: Business Office Building



Project Case: This GRC Raised Floor Project is "Piece bird Group Office Buiding A" in NingBo, Zhejiang Province, China. The Total 12000SQM GRC FLOORS. 1.5 Months Installation Time. GRC FLOOR Finish Height is 100mm.

Why Choose GRC Floor?: This project is designed by Gremany design company. they asked this building use Green Materials, The GRC Floor is Green Materials, Natural Cerment Materials, Fire Proof and Easy to Install.

Application: Hotels

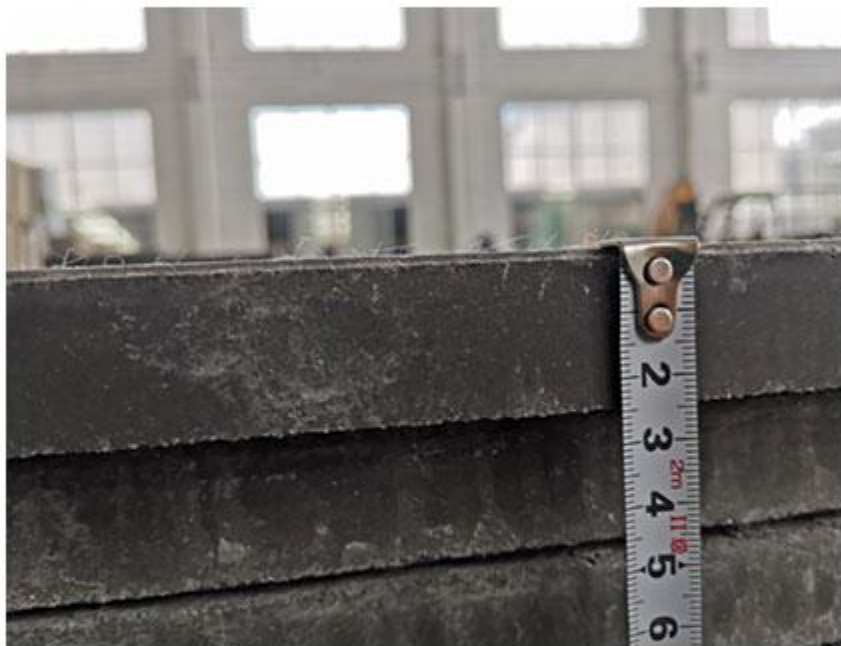


Project Case: This GRC Raised Floor Project is “Cloud Hotel ” in Shanghai, China. The Total 10000SQM GRC FLOORS. 20 Luxurious Hotel Villa areas near shanghai Disney.

Why Choose GRC Floor?: Modular Assemble Systems is Popular in china. China Government force ceiling, wallboard, flooring assembling in Refined Decoration Systems. GRC Floor is easy to install and Green Materials. be the first choose.

GRC RAISED FLOOR PANEL DETAILS

The GRC Raised Floor Size: 500x500x26mm



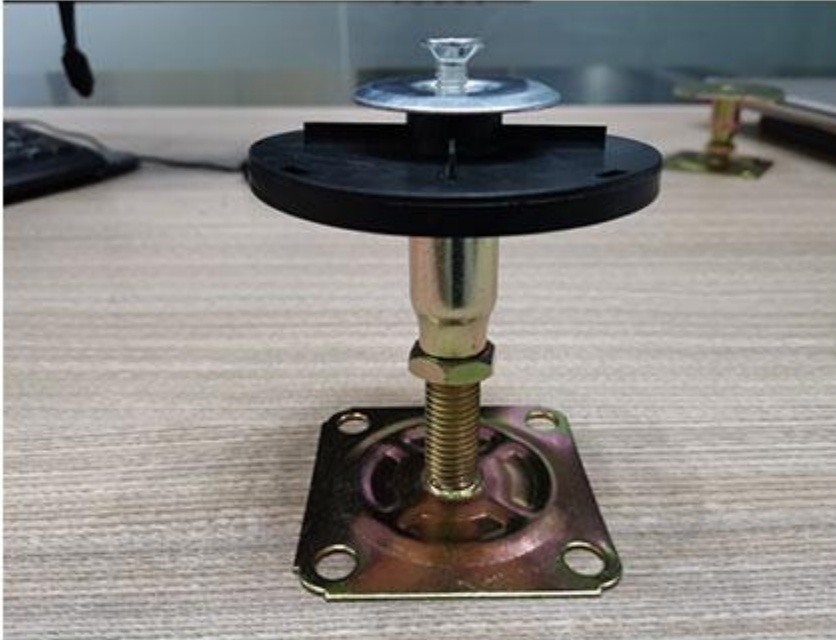
Q: Do you have different GRC Raised Floor Thickness?

A: Currently we only have One type of Mould and One GRC Raised Floor Thickness. We follow the Korean and Japan Market Requirement.

Q: Is it Possible to make different size and thickness?

A: It is Possible and need negotiate with Factory to open a New GRC Raised floor Mould.

GRC FLOOR PEDESTALS



Pedestal Bottom Steel Size: 80mm x 80mm x 1.0mm

Pedestal Top Steel Size: 80mm x 80mm x 3.0mm

Pedestal Tube: Φ 25mm Tube thickness:1.2mm

Pedestal Screw: M16, Screw thickness:1.2mm

Any Low Adjustable Pedestal Or Super High Adjustable Pedestal?

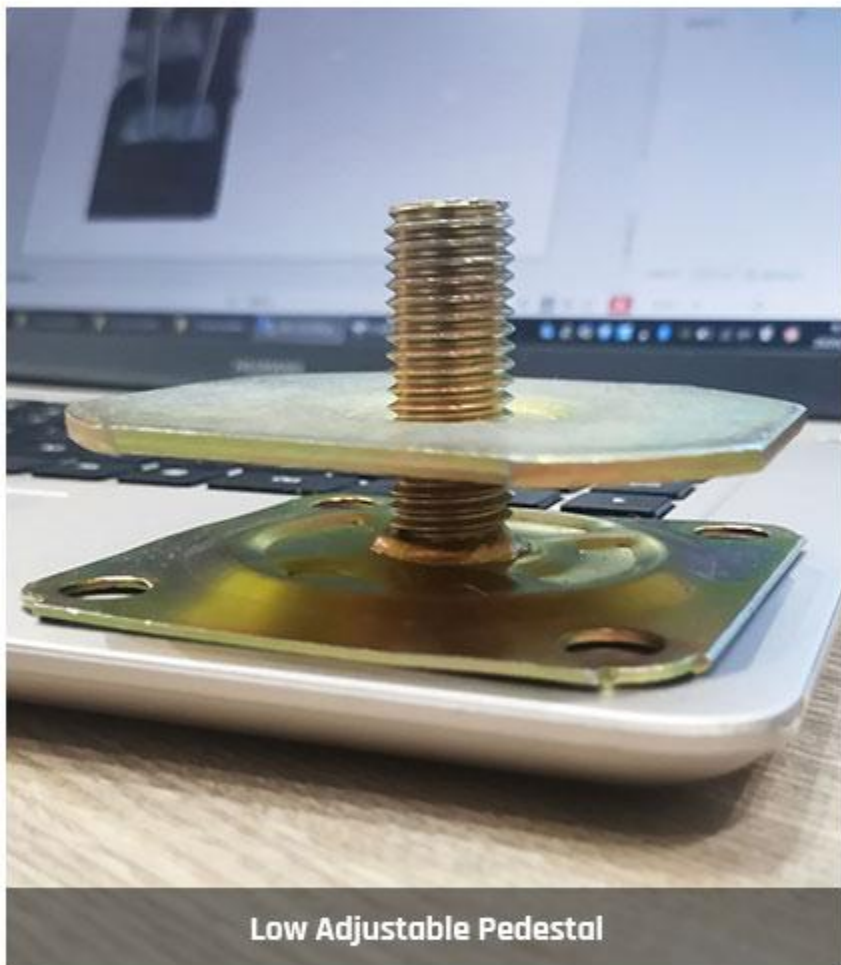
Yes, we have, generally we provide three kinds of Pedestal.

A: Low Adjustable Pedestal (30-50mm)

B: Standard Adjustable Pedestal (50mm-100mm)

C: High Adjustable Pedestal (100mm-600mm)

GRC FLOOR PEDESTAL



Types of GRC Raised Floor Covering



When GRC Raised Floor Installation Finished.

Square Carpet is good choice, also wood flooring is another suitable choice.

Pay more attention on carpet and wood floor thickness:

- For carpet, 5mm+ thickness is required
- For woodcore floor, PE mulching film required to put before installation.

How to Packaging GRC FLOOR?



We Package 50pcs GRC Raised Floor/Wood Pallet

Packaging Size: 500mm x 1000mm x1000mm